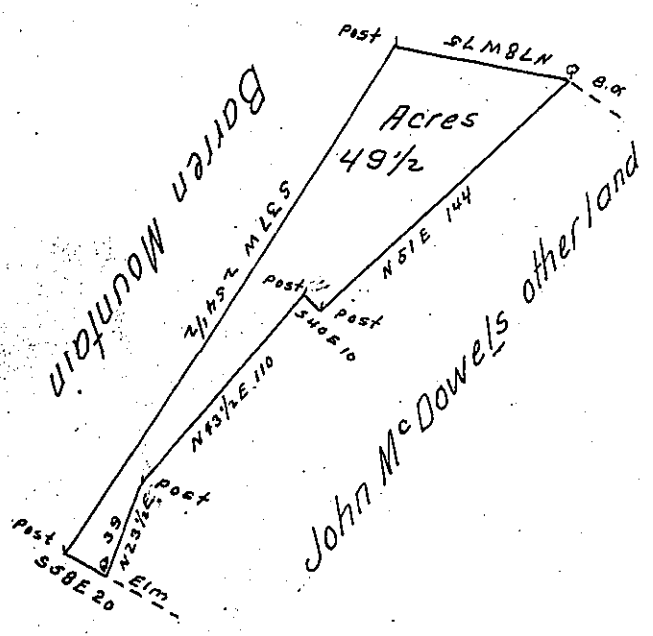


Courses & Distances

- S. 58 E 20
- N. 23 1/2 E 39
- N. 43 1/2 E 110
- S. 40 E 10
- N. 51 E 144
- N. 78 W 75
- S. 37 W 25 1/2



The Draught of a tract of land Called Peidmont situate in Armagh township Cumberland County containing forty nine acres & an half & the usual allowance of six pr. Cent. for roads &c^a Surveyed for John M^cDowell the 7th day of July 1785 in pursuance of a Warrant from the Honorable the Proprietaries Dated the 28th day of August Anno-1770.

pr. Jas^s Harris D. S.

John Lukens Esqr. Surv^r. Gen^l.

IN TESTIMONY that the above is a copy of the original remaining on file in the Department of Internal Affairs of Pennsylvania, made conformably to an Act of Assembly approved the 16th day of February, 1833, I have hereunto set my Hand and caused the Seal of said Department to be affixed at Harrisburg, this twenty fourth day of January 1906.

Joseph B. Brown
Secretary of Internal Affairs.